

Big Hollow Primary School



Big Hollow School District 38 · Ingleside, Illinois

The Educational Program for this school formed the first piece of a long-range master plan which would create a single campus for the District. The site eventually will house 2000 students in three buildings. This building, designed to house eight sections of K-2 students, required the flexibility to accommodate an initial population of fewer sections of K-3 students on an interim basis. The program presented unique challenges to the Architect:

- Flexible arrangements of space
- A variety of different size spaces for large and small group activities
- Group storage for the small community
- Easily supervised but enclosed small group spaces
- Nearby sink and drinking fountain areas, and washrooms for students and staff
- Integrated technology in all areas

The success of the solution lies in its simple, yet creative integration of academic classroom neighborhoods surrounding the learning center and core elements:

Academic neighborhoods are arranged in grade level groupings of eight classrooms, each surrounding a central open, flexible shared multi-use resource area. Half-day kindergarten is housed in a four-room cluster. Each neighborhood includes glass enclosed small group/resource rooms for testing, projects, or specialists, and a dedicated storage room. Each neighborhood shares a sink/drinking fountain/rest room area to support classroom art activities.

Big Hollow Primary School

The **Resource Center** is at the heart of the three academic neighborhoods separated from the classroom area by half height walls with glass allowing it to remain open and inviting and yet maintain its own identity and security. A playful, tiered story area is enclosed within a snail shell-shaped glass block wall.

The simple arrangement of classrooms and learning center results in a compact plan and intimate learning environment. The circulation paths are easy for the young students to follow and understand, promoting a sense of independence as they move about the building.

In **Special Services**, staff has dedicated space in the academic section of the building. The Gymnasium, Multi-purpose Room and Music are located in a separate zone for noise and evening use. Clerestory windows and skylights provide a brightly lit main entrance area and lunch environment. A **stage** located off the gymnasium is enclosed by a folding acoustical partition, allowing it to do double duty as a music room.

The **main office** offers outstanding supervision and visual control over the approaches to the building from inside and outside the building. Visitors must enter the office to gain access to the building. The **cafeteria** and **kitchen** are positioned so that the future grade 3 through 5 building can share the food service operation. The future building would be a mirror of the primary building, but with three eight-classroom neighborhoods. The **central bus area** will eventually serve all three schools on the site. Each building will have its own parking, entrance and administration center.



Big Hollow Primary School

Construction Manager

Professional Construction
Management
Mundelein, Illinois

Budget

- Building Size 65,537 SF
- Student Capacity 650
- Budget \$7,420,000
- Construction Cost \$7,467,970

Time

- Construction Start June 1999
- Completion Date August 2000

Key Staff

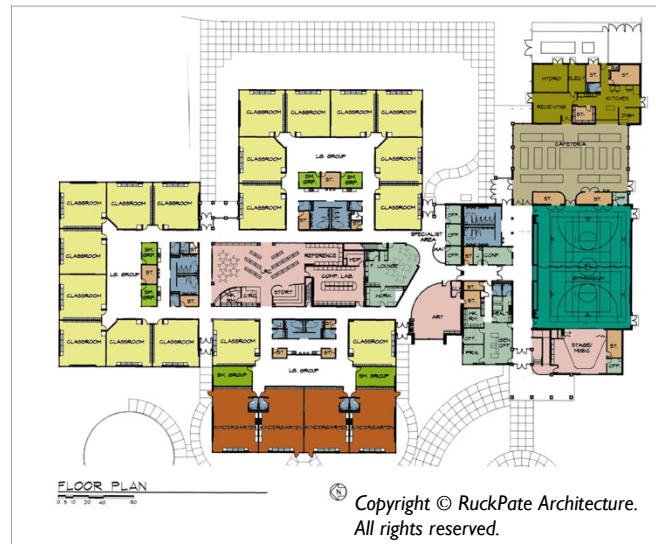
- John Maurer
- Tim Woolever

Consultants

Civil—Gewalt-Hamilton Associates
Structural—Barry A. Goldberg and Co.
Mechanical/Electrical—CS2 Design Group

Contact

Ronald Pazanin
34699 North Highway 12
Ingleside, Illinois 60041
847.587.2632



Copyright © RuckPate Architecture.
All rights reserved.